

Grappenhall and Thelwall Parish Council

Climate Change Are We Doing Enough?

Climate change, the most serious challenge facing the world, can only be tackled effectively if we all take action now. In conjunction with your local Grappenhall & Thelwall Parish Council, we can all play a substantial role in our drive to reduce the risks of climate change. This article has been produced in an attempt to raise awareness of Climate Change and to highlight some of the simple actions that we can all take to protect our environment.

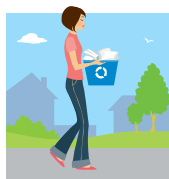


Community recycling

Since 2004 residents of Warrington have increased their recycling and composting rate by over 300%. Warrington has now reached its target of recycling 30% of its total waste.

If you would like to know where your nearest recycling centres are you can visit www.recyclenow.com and enter your postcode, this will show all your local sites (including supermarkets). You will also find lots of useful information on recycling and composting on this website and a 'fun stuff' section for children.

The Warrington Borough Council Waste Minimisation and Recycling Guide, which also contains details of all local recycling centres and household waste sites, can be downloaded at www.recycleforwarrington.co.uk. This website can be used to find further information on recycling and refuse collection and you can also download a copy of the WBC newsletter, the Warrington Recycler. Alternatively you can call Warrington Borough Council on **01925 443000**. WBC are planning to introduce a new, expanded kerbside recycling scheme at the end of September 2008, details to be announced later this year.



Cardboard

Facilities to recycle cardboard are now located at many Recycling Centres. Some cardboard can also be put into your home composter, as long as the contents of the composter are a good mix of materials then cardboard will break down well.

Plastic bottles, don't bottle it, recycle!

Facilities to recycle plastic bottles are now located at most Recycling Centres. Plastic bottles should be cleaned if necessary and have their tops removed before being recycled to ensure they can be crushed flat. Recycling plastic is less environmentally friendly than, for example, glass. So if you have a choice, don't go for plastic! Why not give any plastic containers to children's playgroups for reuse or try to use them at home for storage or refilling. Containers like yoghurt pots and margarine tubs are not made from a type of plastic that can easily be recycled so please **do not** put them in the bottle banks.